



## SuperClear® 15mL and 50mL Centrifuge Tubes



- Prevents breakage & leakage during high-speed centrifugation
- Easy-to-read graduations for accurate measurements
- Patented, extra large, smear-resistant writing panel

[www.labcon.com](http://www.labcon.com)



Labcon's SuperClear® centrifuge tubes offer the highest standard quality and performance.

**CLARITY** Made from an ultra-clear non-cytotoxic medical grade resin that allows you see sample volume and color easily. These tubes feature highly visible printed graduations for easy filling and sample preparation.

**DURABILITY** Engineered with thick, durable walls for ultra high speed centrifugation. SuperClear® tubes consistently out-perform other brands.

**RELIABILITY** Our patented, extra large writing panel is the largest on the market and transparent to easily view your sample through your label. This writing panel is also smear-resistant for permanent coding and won't wear off when inserting and removing your tube from the centrifuge rotor.

**SECURITY** Leak resistant SuperClear® 15mL and 50mL flat caps feature a molded-in sealing ring that keeps your closed tubes completely secure. These caps are ideal for vortexing chemicals and long rocker incubations.

**SUSTAINABILITY** Designed for maximum product recyclability and manufactured in a solar powered facility with unique waste-free molding machines. Tube graphics and graduations are printed with UV cured inks which significantly reduces the emissions of harmful volatile organic compounds (VOCs). Offered in reusable and recyclable racks.





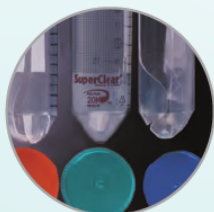
# SuperClear® Special Features:



Leak resistant flat caps feature an elastomeric molded-in sealing ring that keeps your sample secure



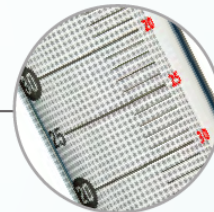
Patented, extra large writing panel shows contents in tube clearly, labels easily, & is smear resistant for permanent coding



Thick, durable, medical-grade resin withstands breakage and allows these tubes to spin at g-forces up to 233% greater than other tubes



Max Freeze indicates the maximum liquid volume for samples that will be frozen



Easy-to-read graduations & reverse scale for accurate measurements



SuperClear® tubes are recyclable and are offered in reusable & recyclable racks

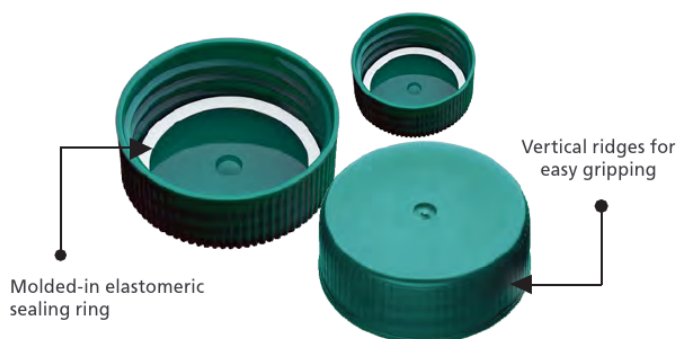


## SuperClear® Cap Options

SuperClear® caps feature precise vertical ridges for “easy grip” ergonomic handling, even with gloves. The low profile cap design allows for tubes to be easily stored in racks without overcrowding. Caps are autoclavable, as long as they are attached to tubes.

*Available in two styles:*

### FLAT CAP



**FLAT CAP:** offers unsurpassed sealing. Both 15mL and 50mL flat caps include an integral molded-in elastomeric sealing ring that eliminates leaking. With their smooth surface, flat style caps can be easily labeled and are designed to produce an evaporation proof seal with a  $\frac{3}{4}$  turn for one-handed operation plus a final  $\frac{1}{4}$  turn to seal them liquid tight.

### PLUG CAP



**PLUG CAPS:** offers a secure seal for extended storage. Plug caps do not include elastomeric sealing ring, but still feature a very deep sealing area.



*SuperClear® flat caps are leak-resistant and keep your sample secure while using a vortexer or rocker.*



## Versatile Packaging Options

Labcon's SuperClear® centrifuge tubes are available in packaging styles for all your needs. All of our sterile products use medical-grade packaging and are sterilized to a Sterility Assurance Level (SAL) of 10<sup>-6</sup> using a validated ISO 11137-2 process with a clearly labeled lot number and sterile expiration date. For the highest level of packaging integrity, we offer our NEW sterile IntegraPack and Individually Wrapped sterile tubes.



### Reusable & Recyclable Plastic Racks

- 25 Tubes Per Rack
- Made from durable polypropylene
- Numbered wells
- Interlock to form benchtop workstations
- Stackable when empty
- Autoclavable (122°C) and Freezable (-80°C)



### Recyclable Cardboard Fiber Racks

- 25 Tubes Per Rack
- Numbered wells
- Folds flat easily for recycling



### IntegraPack

- 5 individually sealed sleeves of 10 sterile tubes
- Validated secure seal for purity
- Can be separated and opened without scissors
- Leak resistant - can be immersed or sprayed with alcohol before opening
- Perfect for clean rooms and under the hood



### Individually Wrapped

- One sterile tube in a thermal-sealed bag
- Validated secure seal for purity
- Leak resistant - can be immersed or sprayed with alcohol before opening
- Designed for techniques that require perfect sterility, such as tissue culture



### Bags

- Bags contain 50 tubes
- Available in sterile and non-sterile
- Bags have a validated secure seal for purity
- Great value and economical choice





## 15mL SuperClear® Centrifuge Tubes

Overall Length	118 mm
Inside Diameter	15 mm
Outside Diameter	17 mm



Item	Sterile	Packaging	Description	Qty/Cs
<b>With Flat Caps</b>				
3141-335-028-9	✓	Plastic Rack	25 tubes/rack	500
3141-335-018-9	✓	Cardboard Fiber Rack	2 racks/pkg	500
3141-330-018-9		Cardboard Fiber Rack	2 racks/pkg	500
3131-325-008-9	✓	IntegraPack	5 pks of 10 tubes	500
3131-165-008-9	✓	Individually Wrapped	1 tube/wrap	100
3131-345-008-9	✓	Bag	50 tubes/bag	500
3131-340-008-9		Bag	50 tubes/bag	500
3141-870-008-9		Bulk - separate bags	tubes/caps separated	500
<b>With Plug Caps</b>				
3142-335-018-9	✓	Cardboard Fiber Rack	2 racks/pkg	500
3142-330-018-9		Cardboard Fiber Rack	2 racks/pkg	500
3132-345-008-9	✓	Bag	50 tubes/bag	500
3132-340-008-9		Bag	50 tubes/bag	500
3142-870-008-9		Bulk - separate bags	tubes/caps separate	500



## 50mL SuperClear® Centrifuge Tubes

Overall Length	115 mm
Inside Diameter	25 mm
Outside Diameter	29 mm



Item	Sterile	Packaging	Description	Qty/Cs
<b>With Flat Caps</b>				
3191-335-028-9	✓	Plastic Rack	25 tubes/rack	500
3191-335-018-9	✓	Cardboard Fiber Rack	25 tubes/rack	500
3191-330-018-9		Cardboard Fiber Rack	25 tubes/rack	500
3181-325-008-9	✓	IntegraPack	5 pks of 10 tubes	500
3181-165-008-9	✓	Individually Wrapped	1 tube/wrap	100
3181-345-008-9	✓	Bag	50 tubes/bag	500
3181-340-008-9		Bag	50 tubes/bag	500
3191-870-008-9		Bulk - separate bags	tubes/caps separated	500
<b>With Plug Caps</b>				
3192-335-018-9	✓	Cardboard Fiber Rack	25 tubes/rack	500
3192-330-018-9		Cardboard Fiber Rack	25 tubes/rack	500
3182-345-008-9	✓	Bag	50 tubes/bag	500
3182-340-008-9		Bag	50 tubes/bag	500
3192-870-008-9		Bulk - separate bags	tubes/caps separate	500



Labcon North America  
Petaluma, CA, U.S.A

+1.800.227.1466  
info@labcon.com  
www.labcon.com



### SuperClear® Centrifuge Tube Quality & Compliance



Product details are current when published; subject to change without notice. Labcon, the Labcon logo, and variations on the foregoing are registered (®) or unregistered trademarks and service marks, of Labcon North America. © Copyright 2020 Labcon. All rights reserved.

REV 2\_6.15.20