

# Transferpette® S

The Transferpette® S pipettes have been benchmarked against leading pipettes for premium performance, light weight, comfort and easy service.

- **Thumb-tip Volume Selection:** Set and secure the volume without even shifting your hand position!
- **Short Pipetting Stroke:** Shortest range of pipetting motion among premium pipettes reduces risk of repetitive strain injury.
- **Fully Autoclavable at 121°C:** Repeatedly autoclavable without disassembly or recalibration.
- **Light Weight and Rugged:** Made with precision advanced materials for chemical resistance, dimensional stability and light weight.
- **Full Pipetting Range:** Adjustable and fixed-volume single channel pipettes from 0.1µL to 10mL; multichannels from 0.5µL to 300µL.
- **Economical:** Fast, in-house cleaning, repair and calibration (without tools) for long, economical service. Accepts most manufacturers' tips.



The Transferpette® S.  
The performance standard in pipetting.



## Single & multichannel pipettes

### Comfortable

Broad, curved for ergonomic tip ejection.

### Secure

A volume brake helps protect against accidental volume changes.

### Clearly Accurate

4-digit display for precise volume settings; always remains visible during pipetting.

### Reduced Static Strain

Pipette suspends from relaxed hand.

### Calibration Adjustment Without Tools

Easy Calibration™ makes it quick. Calibration flag indicates adjustment from factory settings.

### Smooth Operation

Specially selected sealing material provides uniformly smooth pipetting stroke.

### Low Strain

Resilient V-rings and the stepped design of the tip ejector reduce tip mounting and ejection forces. V-rings support broad tip compatibility. Two O-ring design on 0.5-10µL model provides directional accuracy and improved fit.

### Convenient

Manifold rotates 360° in both directions to allow you to pipette from any angle.



## Transferpette® S single & multichannel pipettes

The Transferpette® S family of pipettes provides unparalleled comfort and ease-of-use in a central-button pipette.

- Innovative materials reduce weight, improve corrosion resistance and protect accuracy, even after repeated autoclaving.
- Short pipetting stroke reduces the risk of RSI (repetitive strain injury), and enhances comfort for operators with smaller hands. Curved finger rest supports pipette for a relaxed grip.
- True one-handed operation. Volume can be set and secured with the tip of the thumb - even while wearing gloves.
- Large separate tip ejector for reduced tip ejection forces.
- Pistons in multichannel models are light, dimensionally stable and corrosion resistant.
- Easy Calibration™ technology ensures fast, easy, in-lab calibration adjustments without tools for ISO/GLP compliance. (See description of Easy Calibration™, page 56).
- CE-IVD compliant.

### Color Coded

Easy selection of the right tip.



Easy thumb-tip volume setting

### Items supplied

The Transferpette® S is supplied with the following items:

- Performance certificate
- Operating manual
- Shelf mount

### Maximum compatibility

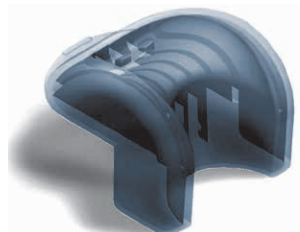
Tip cone design offers excellent fit with BRAND tips and broadest compatibility with tips from other manufacturers.



Covered nameplate—identifies pipettes without messy tape!



Red recalibration flag indicates adjustment from factory specifications



Shelf mount included with Transferpette® S single and multichannel pipettes



Carousel stand for handy storage of up to six Transferpette® S single or multichannel pipettes

# Transferpette® S single and multichannel pipettes



**NEW!**

## Transferpette® S Adjustable Volume Single Channel Pipettes

Capacity, µL**	Model	A* < ± %	CV* ≤ %	Subdivision, µL	Cat. No.	2014 List Price
0.1-1	D-1	2	1.2	0.001	704768	\$342.00
0.1-2.5	D-2.5	1.4	0.7	0.002	704769	311.00
0.5-10	D-10	1	0.5	0.01	704770	311.00
2-20	D-20	0.8	0.4	0.02	704772	311.00
10-100	D-100	0.6	0.2	0.1	704774	311.00
20-200	D-200	0.6	0.2	0.2	704778	311.00
100-1000	D-1000	0.6	0.2	1	704780	311.00
500-5000 (0.5-5mL)	D-5000	0.6	0.2	5	704782	311.00
1000-10000 (1-10mL)	D-10000	0.6	0.2	10	704784	311.00



## Transferpette® S Fixed Volume Single Channel Pipettes

Capacity, µL	Model	A* < ± %	CV* ≤ %	Subdivision, µL	Cat. No.	2014 List Price
10	F-10	1	0.5	—	704708	169.00
20	F-20	0.8	0.4	—	704716	169.00
25	F-25	0.8	0.4	—	704720	169.00
50	F-50	0.8	0.4	—	704728	169.00
100	F-100	0.6	0.2	—	704738	169.00
200	F-200	0.6	0.2	—	704744	169.00
500	F-500	0.6	0.2	—	704754	169.00
1000	F-1000	0.6	0.2	—	704762	169.00

Transferpette® S Single channel pipettes are supplied with performance certificate, operating manual, shelf mount and three year warranty



## Transferpette® S Single Channel Starter Sets

Starter Set	Includes following Transferpette® S models	Cat. No.	2014 List Price
Micro	D-1, D-10, D-100	704790	\$745.00
Mid-Size	D-20, D-200, D-1000	704791	745.00
Macro	D-1000, D-5000, D-10000	704792	745.00
Standard	D-10, D-100, D-1000	704793	745.00

Starter Sets include three pipettes with performance certificates, operating manual, three shelf mounts, and three filled Tip-Boxes with appropriate sized tips.

## Transferpette® S -8/-12 Multichannel Pipettes

Capacity, µL**	A* < ± %	CV* ≤ %	Subdivision, µL	Transferpette® S -8 Channel	2014 List Price	Transferpette® S -12 Channel	2014 List Price
0.5-10	1.6	1.0	0.01	703700	\$760.00	703720	\$938.00
5-50	0.8	0.4	0.1	703706	760.00	703726	938.00
10-100	0.8	0.3	0.2	703708	760.00	703728	938.00
20-200	0.8	0.3	0.2	703710	760.00	703730	938.00
30-300	0.6	0.3	0.5	703712	760.00	703732	938.00

Transferpette® S -8/-12 pipettes supplied with performance certificate, operating manual, shelf mount, two tip boxes, reagent reservoir, pack of replacement V-rings. One-year warranty.

## Accessories

	Cat. No.	2014 List Price
Carousel Stand - for up to six Transferpette® S single or multichannel pipettes, pack of 1	704805	\$134.00
Individual Multichannel Stand - for all Transferpette® S, Transferpette® electronic and Transferpette® multichannel pipettes, pack of 1	703440	38.00
Shelf Mount - for all Transferpette® S single or multichannel pipettes, pack of 1	704810	28.00
Autoclavable Reagent Reservoirs – PP, with translucent lids, pack of 10	703459	33.00
Autoclavable Reagent Reservoirs – PP, sterile, individually wrapped, 100 pieces total	703411	274.00
Autoclavable Reagent Reservoirs – PP, sterile, 40 packs of five, 200 pieces total	703409	251.00

A\*=Accuracy, CV\*=Coefficient of Variation

\* The value of accuracy and coefficient of variation are final test values referring to the delivered nominal volume, instrument and distilled water at equilibrium with ambient temperature (20°C/68°F) and with smooth operation.

\*\* Tip selection chart see page 24